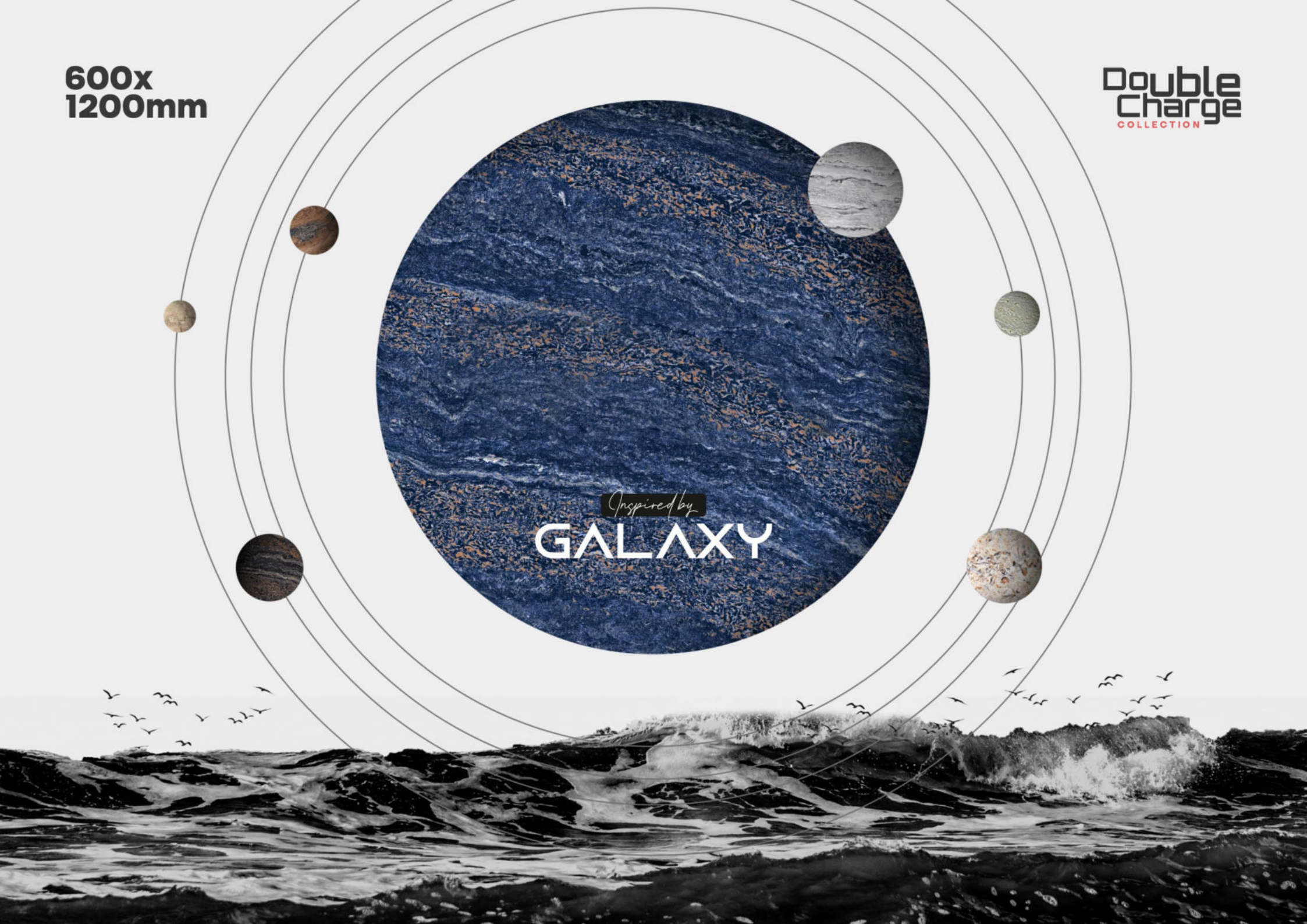


600x  
1200mm

Double  
Charge  
COLLECTION

Inspired by  
GALAXY





Inspired By  
**EARTH'S** RICH  
**STONE AND**  
**TEXTURES**

---





# EMBRACE CONTEMPORARY STYLE WITH SPACE



## FEATURES



9MM  
Thickness



Frost  
Resistance



High Load  
Resistance



Thermal  
Impact



Anti-slip  
Finish



Removable &  
Reuse



Easy to  
Install



Chemical  
Resistance

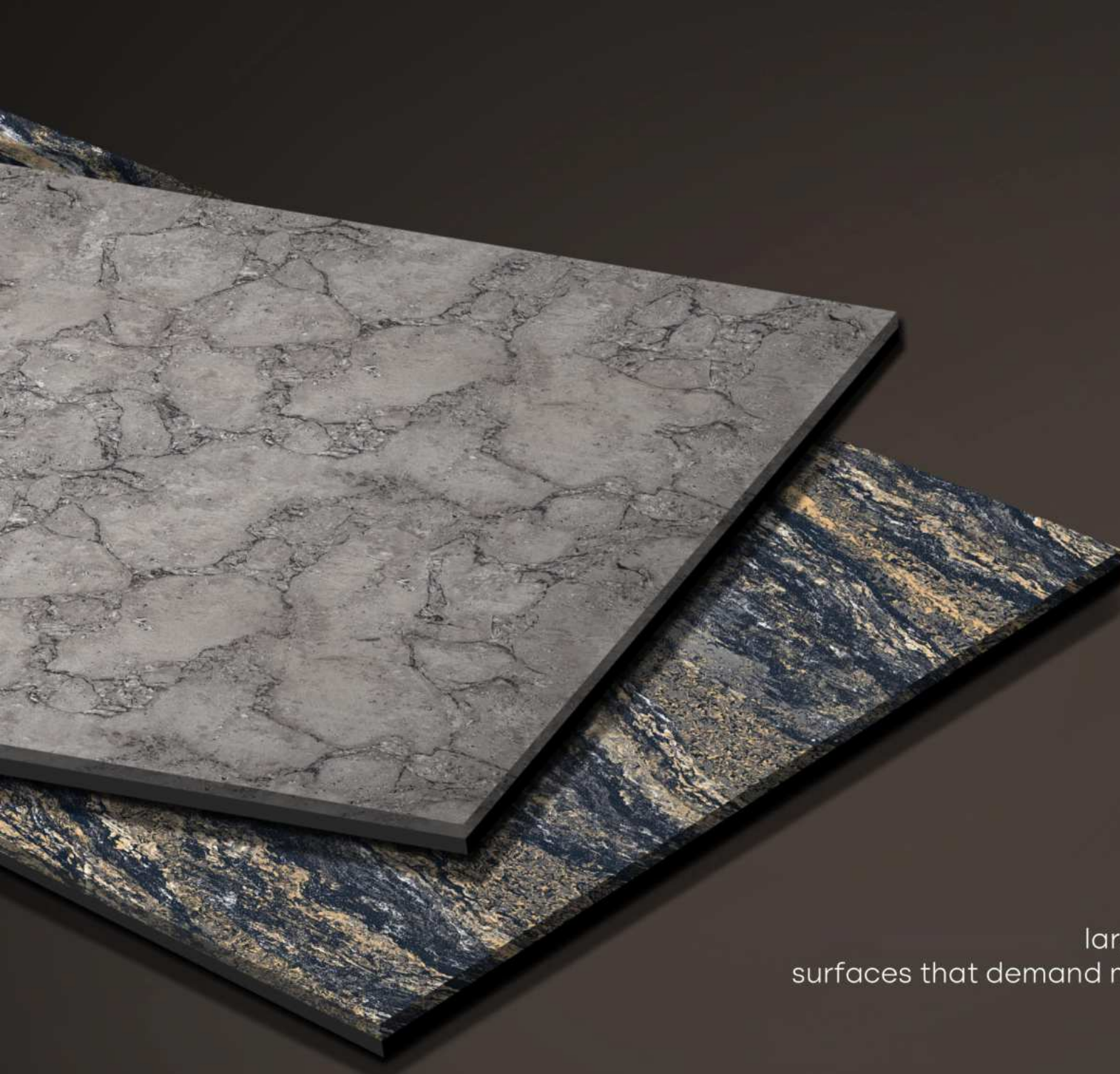


Ecological  
Finish



Fire  
Proof





**LARGEST  
PRODUCTION CAPACITY**

**600x  
1200mm**  
**GVT / PGVT**

large-sized slabs are ideal for  
surfaces that demand maximum hygiene, strength  
and aesthetic harmony.

DIMENSION  
**600x1200 mm**  
2'x4' | 24"x48"

FINISH  
**POLISHED GLOSSY**  
SURFACE

<div>ALTA</div> <div></div> <div>BEIGE GREY</div>	<div>CITIC</div> <div></div> <div>IVORY SILVER</div>	<div>DOPIC</div> <div></div> <div>BROWN GRIS WHITE</div>	<div>FOLIA</div> <div></div> <div>BEIGE BROWN WHITE</div>	<div>FERON</div> <div></div> <div>WHITE</div>	
<div>MESPA</div> <div></div> <div>NERO WHITE</div>	<div>OXITANO</div> <div></div> <div>GREY WHITE</div>	<div>PIDA</div> <div></div> <div>GREY</div>	<div>SILERIO</div> <div></div> <div>BROWN WHITE</div>	<div>TERACON</div> <div></div> <div>BROWN GREY</div>	<div>USETA</div> <div></div> <div>GREY WHITE</div>
<div>ZIZEL</div> <div></div> <div>WHITE</div>					

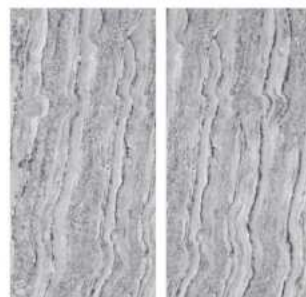
# ALTA



BEIGE



GREY



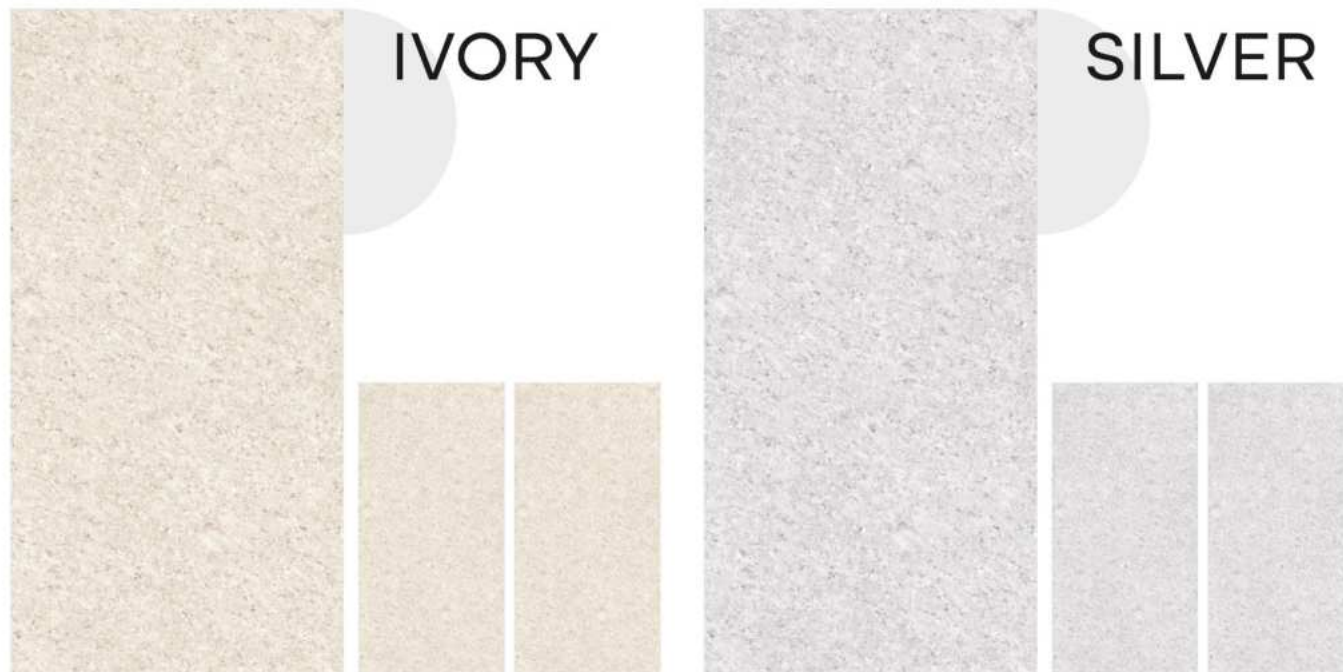
FINISH  
**POLISHED GLOSSY**  
SURFACE

DIMENSION  
**600x1200 mm**  
24"X48" | 2'X4'

RANDOM  
**FACES**



## CITIC



FINISH  
**POLISHED GLOSSY**  
SURFACE

DIMENSION  
**600x1200 mm**  
24"X48" | 2'X4'

RANDOM  
**FACES**

[BACK TO INDEX](#)



# DOPIC



BROWN



GRIS



WHITE



FINISH  
**POLISHED GLOSSY**  
SURFACE

DIMENSION  
**600x1200 mm**  
24"X48" | 2'X4'

RANDOM  
**FACES**

[BACK TO INDEX](#)





# FERON



WHITE



FINISH  
**POLISHED GLOSSY**  
SURFACE

DIMENSION  
**600x1200 mm**  
24"X48" | 2'X4'

RANDOM  
**FACES**

[BACK TO INDEX](#)



# FOLIA

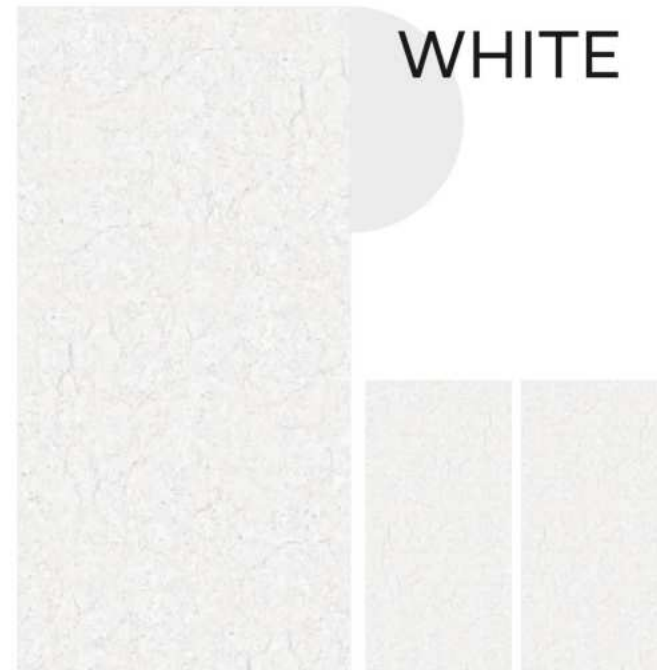
BEIGE



BROWN



WHITE



FINISH  
**POLISHED GLOSSY**  
SURFACE

DIMENSION  
**600x1200 mm**  
24"X48" | 2'X4'

RANDOM  
**FACES**

[BACK TO INDEX](#)



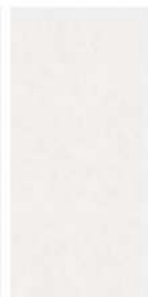


# MESPA

NERO



WHITE



FINISH  
**POLISHED GLOSSY**  
SURFACE

DIMENSION  
**600x1200 mm**  
24"X48" | 2'X4'

RANDOM  
**FACES**

[BACK TO INDEX](#)



# OXITANO



GRAY



WHITE



FINISH  
**POLISHED GLOSSY**  
SURFACE

DIMENSION  
**600x1200 mm**  
24"X48" | 2'X4'

RANDOM  
**FACES**

[BACK TO INDEX](#)





# PIDA



GREY



FINISH  
**POLISHED GLOSSY**  
SURFACE

DIMENSION  
**600x1200 mm**  
24"X48" | 2'X4'

RANDOM  
**FACES**

[BACK TO INDEX](#)



# SILERIO



BROWN



WHITE



FINISH  
**POLISHED GLOSSY**  
SURFACE

DIMENSION  
**600x1200 mm**  
24"X48" | 2'X4'

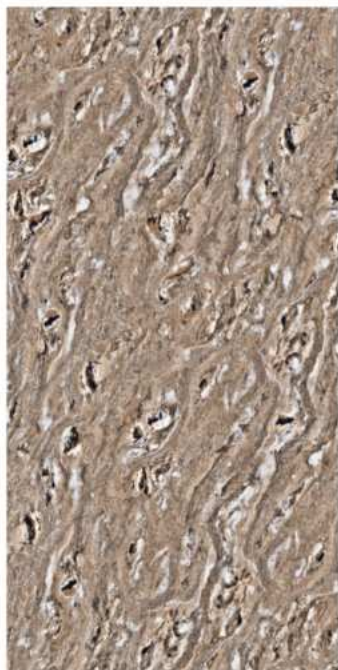
RANDOM  
**FACES**

[BACK TO INDEX](#)

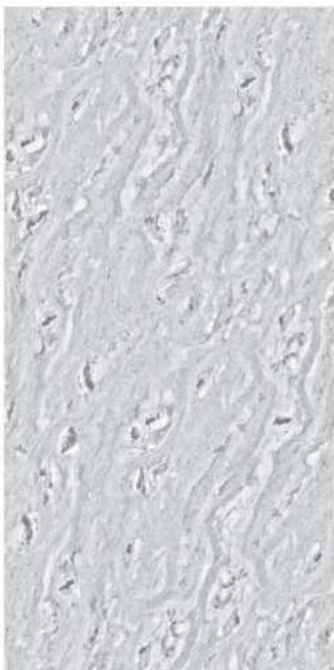
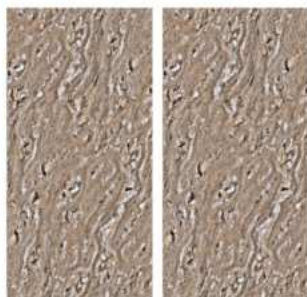




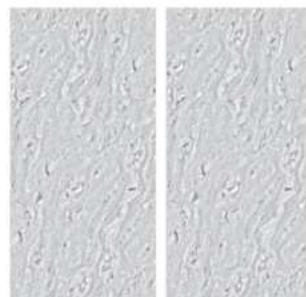
# TERACON



BROWN



GRAY



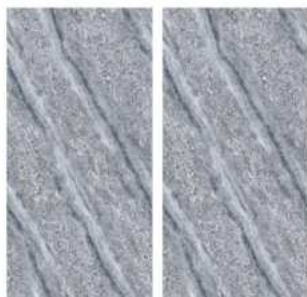
FINISH  
**POLISHED GLOSSY**  
SURFACE

DIMENSION  
**600x1200 mm**  
24"X48" | 2'X4'

RANDOM  
**FACES**

## USETA

GREY



WHITE



FINISH  
**POLISHED GLOSSY**  
SURFACE

DIMENSION  
**600x1200 mm**  
24"X48" | 2'X4'

RANDOM  
**FACES**

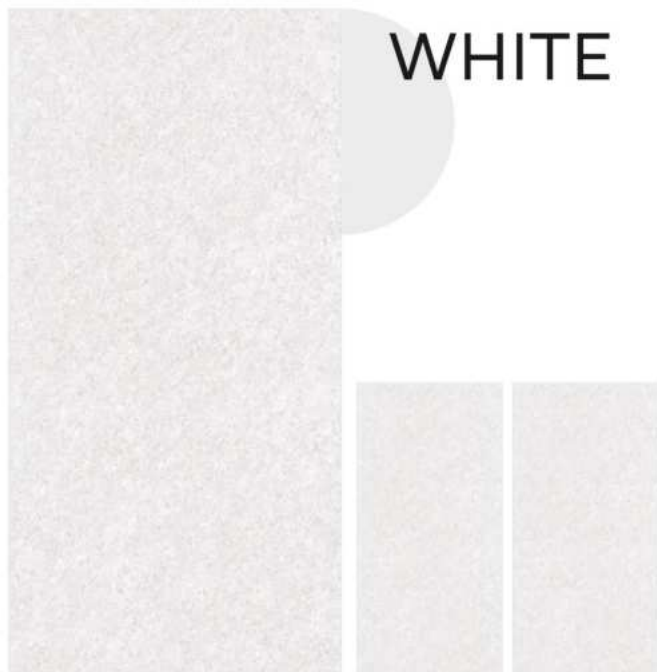
[BACK TO INDEX](#)





## ZIZEL

WHITE



FINISH  
**POLISHED GLOSSY**  
SURFACE

DIMENSION  
**600x1200 mm**  
24"X48" | 2'X4'

RANDOM  
**FACES**

[BACK TO INDEX](#)





#### **FLEXURAL RESISTANCE**

It has the ability to resist deformation under load. It deforms significantly but does not break



#### **EAR RESISTANCE**

It is the core feature it helps to give the perfect finish to edges while cutting.



#### **THERMIC IMPACT RESISTANCE**

This provides the surface to tolerate the impact of objects falling on them.



#### **STAIN RESISTANCE**

It is durable and easier to clean and retain the original exquisiteness every time.



#### **ABSORPTION RESISTANCE**

Our tiles are coated with liquid glass and hence absorb less water.



#### **EASY TO INSTALL**

This creation is super easy to apply it can be applied without any tool or laying instructions.



#### **FROST PROOF**

they are porous and absorb water easily. These tiles have relatively high frost resistance.



#### **SCRATCH RESISTANCE**

It is highly recommended for its scratch resistance property.



#### **SLIP RESISTANCE**

Our tiles have an abrasive grit on their surface, increasing their slip resistance significantly.



#### **CHEMICAL RESISTANCE**

Its highly resistant to harsh chemical agents like alkalis, acids, household chemicals, and swimming pool salts.



#### **EASY TO CLEAN**

It's highly convenient as it is easy to clean and it provides comfort with ease.



#### **ECO LOGICAL**

We are committed to the environment and recognize that sustainability is a significant and crucial part of our journey.



# TECHNICAL SPECIFICATION

We are delighted to introduce our latest line of high-quality tiles, designed to meet the exacting standards of our esteemed clientele. we pride ourselves on delivering superior products that combine functionality, durability and aesthetic appeal.

---

## 600X1200MM

# TILES IN EVERY SPACE

We understand that choosing the right tiles for specific application areas is crucial for achieving both functionality and aesthetic appeal. That's why we're delighted to introduce you to our comprehensive selection of tiles designed to excel in various environments:



Dining Hall



Bedroom



Bathroom



Living Room



SPA



Restaurant



Airport



Railway Station



Outdoor



Swimming Pool Area



Garden Area



Parking Area

---

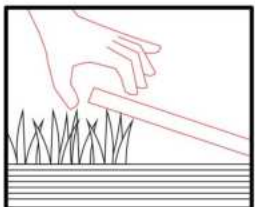
**600X1200MM**



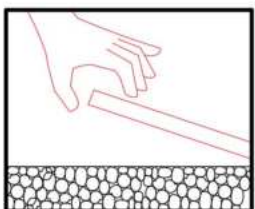


## LAYING INSTRUCTION

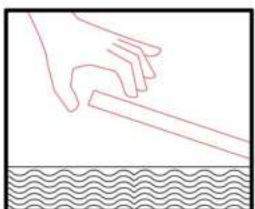
---



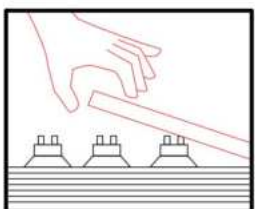
DRY LAYING  
ON  
GRASS



LAYING ON  
GARVEL



LAYING ON  
SCREED  
WITH ADHESIVE



LAYING ON  
RAISED  
FLOOR



## TECHNICAL SPECIFICATION

CHARACTERISTIC	STANDARD AS PER ISO 13006:2018/ EN14411 Gr.B1a	MEAN VALUE OF	TEST METHOD
<b>Regulatory Properties</b>			
Deviation in length and width	± 0.30 % (±1.00mm)	± 0.10 %	ISO 10545-2
Deviation in thickness	± 5.00 % (±0.50mm)	± 4.00 %	ISO 10545-2
Straightness in side	± 0.30 % (±0.80mm)	± 0.10 %	ISO 10545-2
Rectangularity	± 0.30 % (±1.50mm)	± 0.10 %	ISO 10545-2
Surface flatness central curvature	± 0.40 % (±1.80mm)	± 0.20 %	ISO 10545-2
Surface flatness edge curvature	± 0.40 % (±1.80mm)	± 0.20 %	ISO 10545-2
Surface flatness warpage	± 0.40 % (±1.80mm)	± 0.10 %	ISO 10545-2
Surface quality	> 95% defects free	> 95% defects free	ISO 10545-2
Small Color Difference(For Plain Color)	ΔE <1.00	ΔE < 0.30	ISO 10545-16
Glossiness (Polished)	as per mfg.	Gloss Value > 90	Glossmeter 60°
Glossiness (Matt)	as per mfg.	3° < GLOSS < 7°	Glossmeter 60°
Glossiness (satin/Posh)	as per mfg.	7° < GLOSS < 18°	Glossmeter 60°
<b>Structural Properties</b>			
Water absorption	0.50 % ≤ Ev ≤ 3.00 %	0.060 % ≤ Ev ≤ 3.00 %	ISO 10545-3
Bulk density	as per mfg.	> 2.28 gm/cc	ISO 10545-3
<b>Massive Mechanical Properties</b>			
Modulus of rupture	Min. 30.0 N/mm <sup>2</sup>	Min. 35.0 N/mm <sup>2</sup>	ISO 10545-4
Breaking strength thickness ≥7.5	Min. 700.0 N	Min. 1000.0 N	ISO 10545-4
Breaking strength thickness ≥7.5	Min. 1100.0 N	Min. 1300.0 N	ISO 10545-4
Breaking strength thickness ≥7.5(For ≥15mm)	Min. 1100.0 N	Min. 1800.0 N	ISO 10545-4
<b>Surface Mechanical Properties</b>			
MOH'S hardness	as per mfg.	Polished Min 4* / Satin,Posh & Matt Min 6	BS EN 15771
Surface abrasion resistance	as per mfg.	Polish Min. Class 2, Satin & Posh Min. Class 3, & Matt Min. Class 4	ISO 10545-7
Deep abrasion resistance	Max. 175mm <sup>3</sup>	Max. 132mm <sup>3</sup>	ISO 10545-6
<b>Thermal Hydrometric Properties</b>			
Moisture expansion	Max. 0.06%(0.6mm/m)	0.02mm/m	ISO 10545-10
Thermal expansion(COE) at 100°C	as per mfg.	Max. 6.0 x 10 <sup>-6</sup>	ISO 10545-8
Thermal shock resistance	Min. 10 Cycle	Min. 10 Cycle	ISO 10545-9
Impact resistance(COR)	Min. 0.55	Min. 0.55	ISO 10545-5
Frost resistance	as per mfg.	Frost Proof	ISO 10545-12
<b>Chemical Properties</b>			
Resistance to staining glazed	Min. Class 3	Min. Class 4	ISO 10545-14
Resistance to household chemicals & swimming pool salts glazed	Min. Class GB	Min. Class GA	ISO 10545-13
Resistance to low concentrate acid and alkalis glazed	as per mfg.	Min. Class GLA**	ISO 10545-13
Resistance to high concentrate acid and alkalis unglazed	as per mfg.	Min. Class GHB**	ISO 10545-13
<b>Safety Properties</b>			
Skid resistance (COF-WET PENDULAM)##	as per mfg.	Glossy P0(<12),Satin, Posh ≥P1(12-24) Matt ≥P2(25-34)	BS 7976-2
Slip resistance - (Satin / Matt (DCOF) (R value)##	as per mfg.	R9 to R13**	DIN 51130
Fire resistance	as per mfg.	Fire Proof	N.A.

## PACKING DETAILS

PRODUCT	SIZE	THICKNESS	TILES / BOX	COVERAGE AREA / BOX	WEIGHT
GVT-PGVT	600x 1200mm	8.5mm	2 pcs.	1.44 sq. mtr.	27.300 KG (APPROX)

